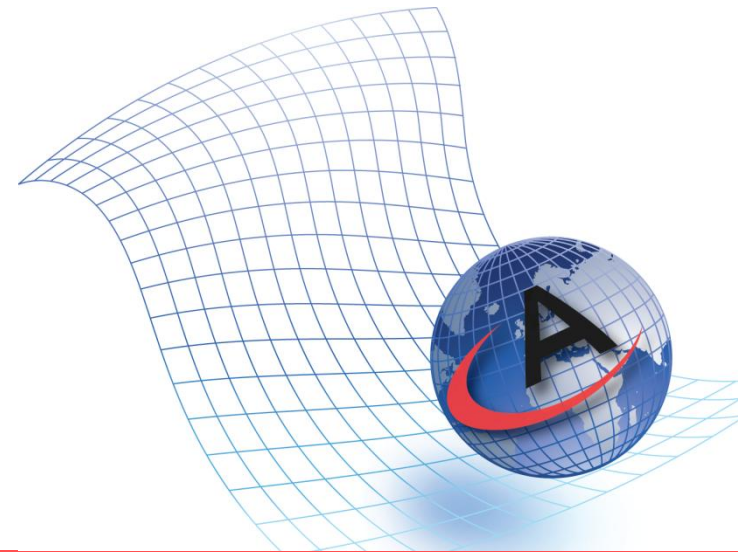




# FaceR MobileID Use



# What Animetrics Does

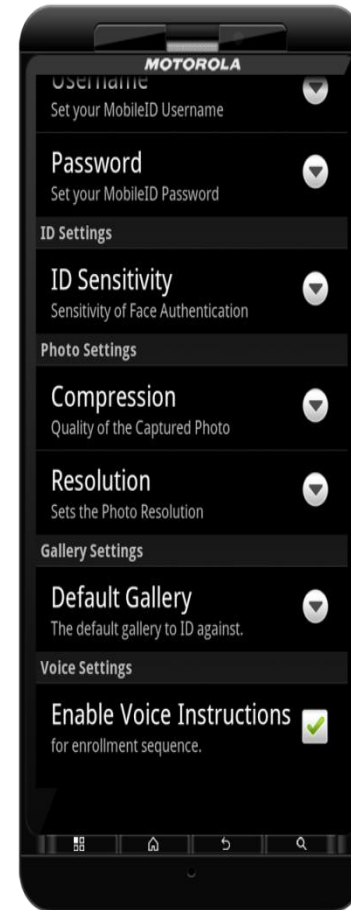
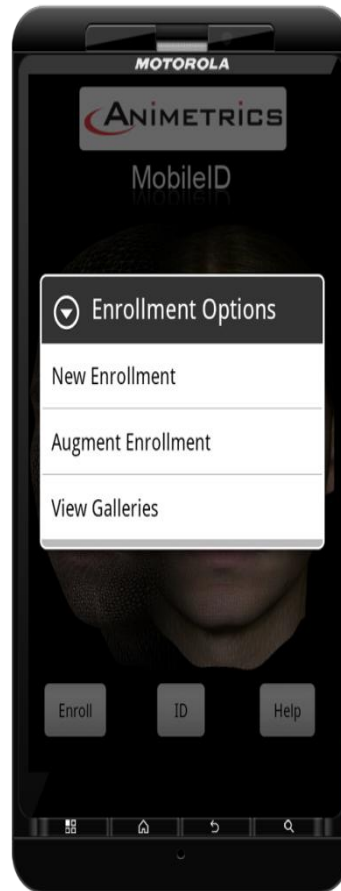
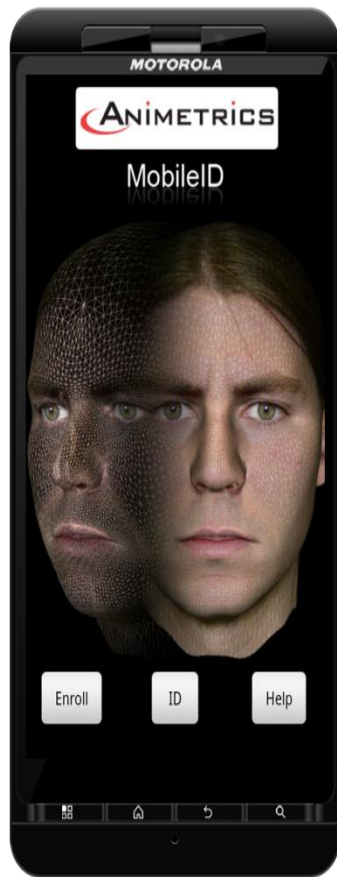
Our Company:

- We build Mobile Applications Connecting
- to Photographic Clouds
- via Facial Search Engine
- Web Services

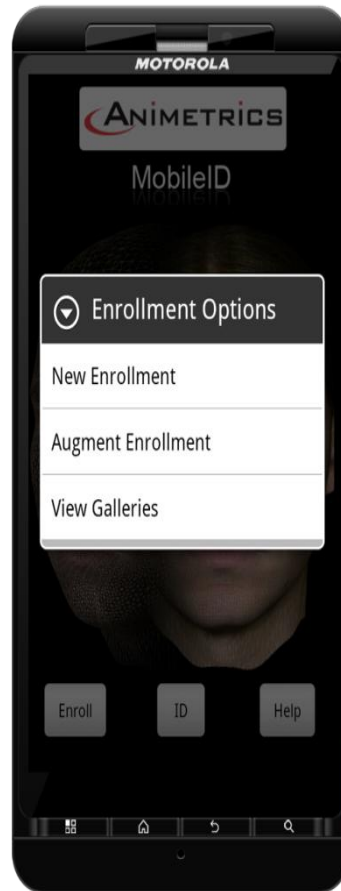
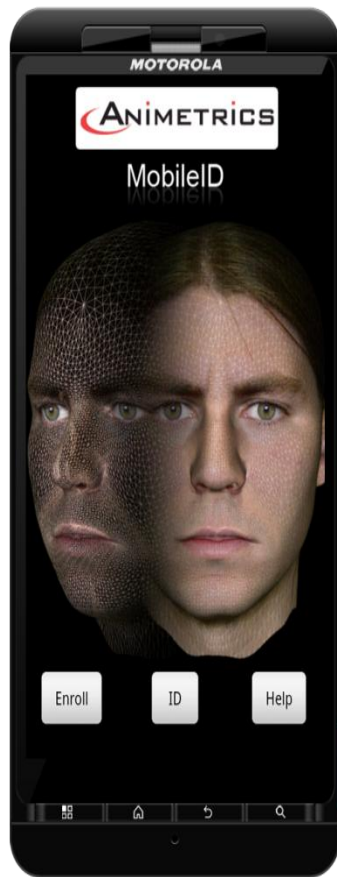
# FaceR MobileID

- FaceR MobileID is used to:
  - Identify an individual from a set of known people using a 1: Many Verification
  - 1: Many: Which of these people in the list is it?
    - Gallery is any people you choose
      - Criminals
      - Family Members
      - Students
      - Celebrities

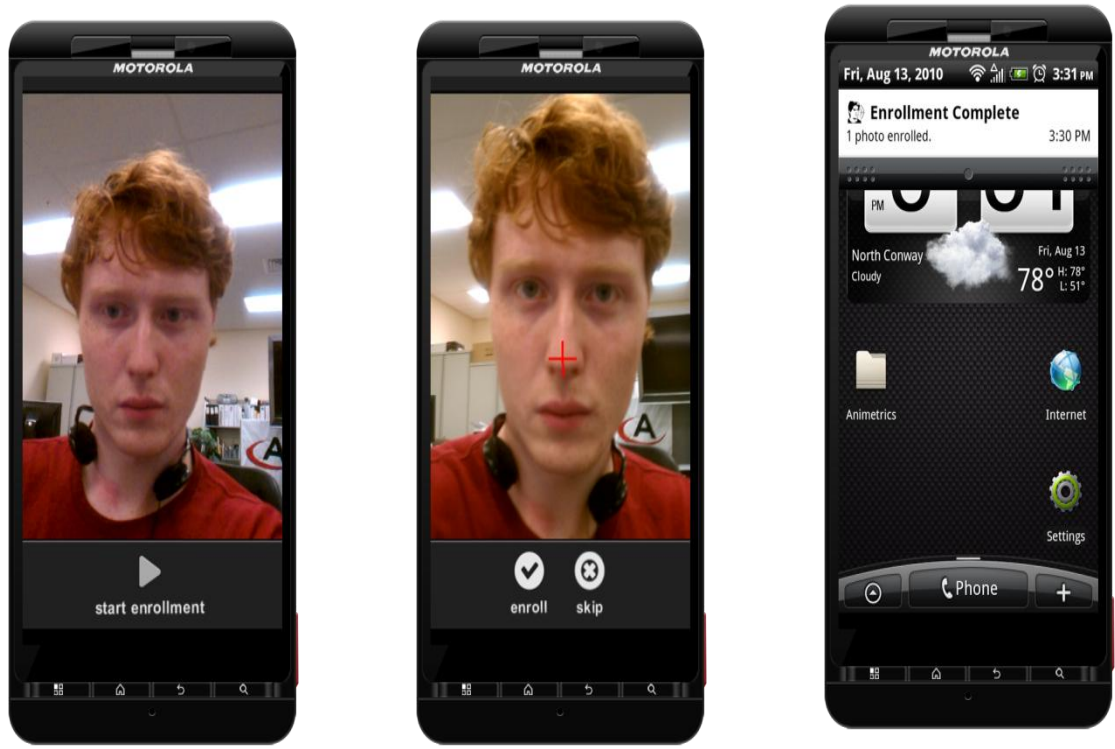
# DROID X Screen Shot of Application With Splash Screen and Settings



# DROID X Screen Shot of Application With Enrollment Option and New Enrollment Name



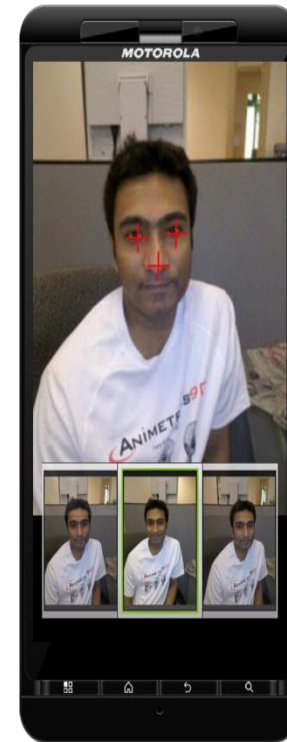
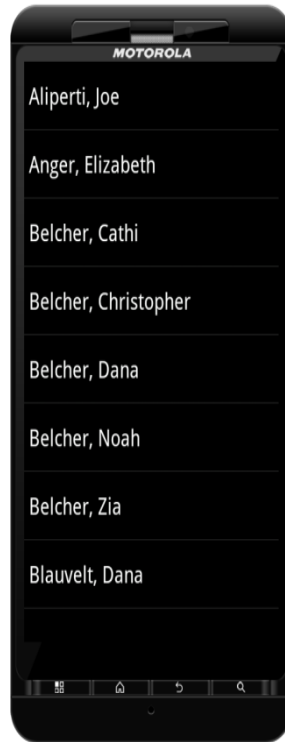
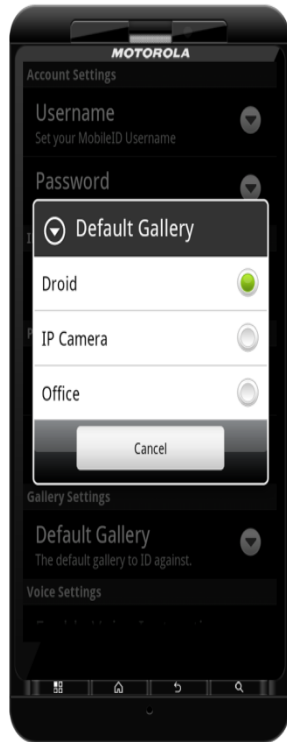
# DROID X Screen Shot With Examples of Enrollment Procedure Placing Noretips



## Standard Logon Screen

- Screens can be customized to customer requirements

# DROID X Screen Showing Gallery Selection and Enrollments into Gallery



## Standard Logon Screen

Screens can be customized to customer requirements

# DROID X Screen Shot of Application Showing Verification and Watch list Identification

